



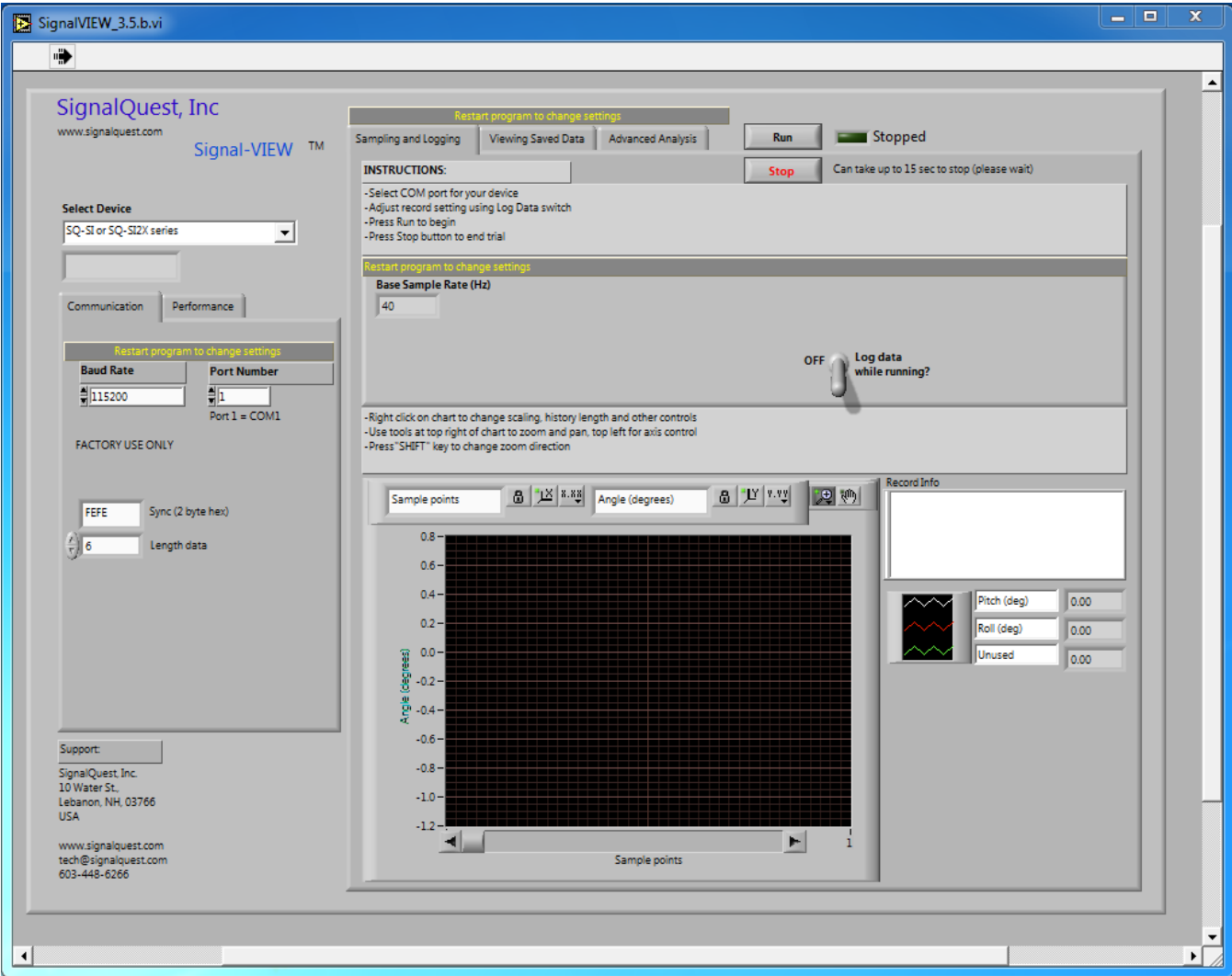
SIGNALVIEW SOFTWARE BASIC

OVERVIEW

- The SignalVIEW software is designed to be used with SignalQuest's SQ-SI, SI2X and SQ-XLD series products
- The easy to use, LabVIEW interface provides a real-time interface for the data acquisition system.
- Allows users to configure sampling parameters, view and analyze data, save waveforms, and export data values to a spreadsheet or text editor.

SAMPLING AND LOGGING

- This area provides the interface for capturing data from the SQ-SI, SI2X, SQ-XLD, and SQ-SVS devices.
- Select effective sample rate, baud rate, and ports.
- Access additional tools to zoom, pan, and change history length.



SIGNALVIEW SOFTWARE BASIC

VIEWING SAVED DATA

- This area provides the interface for viewing and analyzing saved data
• Data values can be exported to a spreadsheet or text editor or saved as a waveform for future analysis.
• Access additional tools to zoom, pan, and change history length.



SignalVIEW_3.5.b.vi

SignalQuest, Inc
www.signalquest.com
Signal-VIEW™

Select Device
SQ-SI or SQ-SI2X series

Communication Performance

Baud Rate: 115200 Port Number: 12
Port 1 = COM1

FACTORY USE ONLY
FEFE Sync (2 byte hex)
5 Length data

Support:
SignalQuest, Inc.
10 Water St.,
Lebanon, NH, 03766
USA
www.signalquest.com
tech@signalquest.com
603-448-6266

Restart program to change settings

Sampling and Logging Viewing Saved Data Advanced Analysis Run Stopped

INSTRUCTIONS:
-If you want to export data to a tab delimited file after loading, select the "Export" switch below
-Press Run
-Press Load File button to choose binary (*.DAT) file using the file dialog
-Repeat steps for each new file (you need to press Run for each new file)
Note: Be sure to clear chart between consecutive trials (right click in the chart and select Clear Chart)

Restart program to change settings

Export to spreadsheet after loading? OFF

Load File

Sample points Angle (degrees)

Angle (degrees)

Record Info
Device Model: SQ-SI or SQ-SI2X series
Sample rate: 40 Hz
Datestamp: 5/3/2012 - 5:31 PM
Data order: Pitch (deg) Roll (deg) Unused

Pitch (deg)	95.90
Roll (deg)	85.80
Unused	0.10

Note: If your log file is longer than 65,534 points, right click on the graph and increase the chart history length to view more data
Be sure to clear the chart before loading a new data set. Right click in the chart area and select Clear Chart.

614